



TS31 STANDARD CAB, Reference Guide



Reference guide for:

Rear glass & wiper

Front glass & wiper

Cab door

Operator fan

Cab heater

TS31 Std Cab Rear glass & wiper components



RR Wiper Components

Part Number	Description	Qty
55433-UMX31-71	Wiper Blade	1
55108-UNJA0-71	Wiper Arm	1
55403-UMX31-71	Wiper Motor (mounting hardware Included)	1
55431-UMX31-71	Spacer, RR Wiper Motor Shaft	1
55432-UMX31-71	Spacer, RR Wiper Motor Screw	1
55965-UMX31-71	Washer, Bonded Sealing 1/4 x 3/4 OD	1
55987-UMX31-71	Nut, Nylock Hex - M5x0.8 Class 8 ZP Steel	1
55966-UMX31-71	Washer, Bonded Sealing	1
55924-UMX31-71	Screw, Hex Head Cap	1
55961-UMX31-71	Washer, Flat - M5	1

RR winow, Gas/Diesel

Part Number	Description	Qty
55207-UMX31-71	Assembly, Window - Throw-out (gas/diesel)	1
55271-UMX31-71	HINGE KIT	1
55631-UMX31-71	Seal, Glass Offset	1

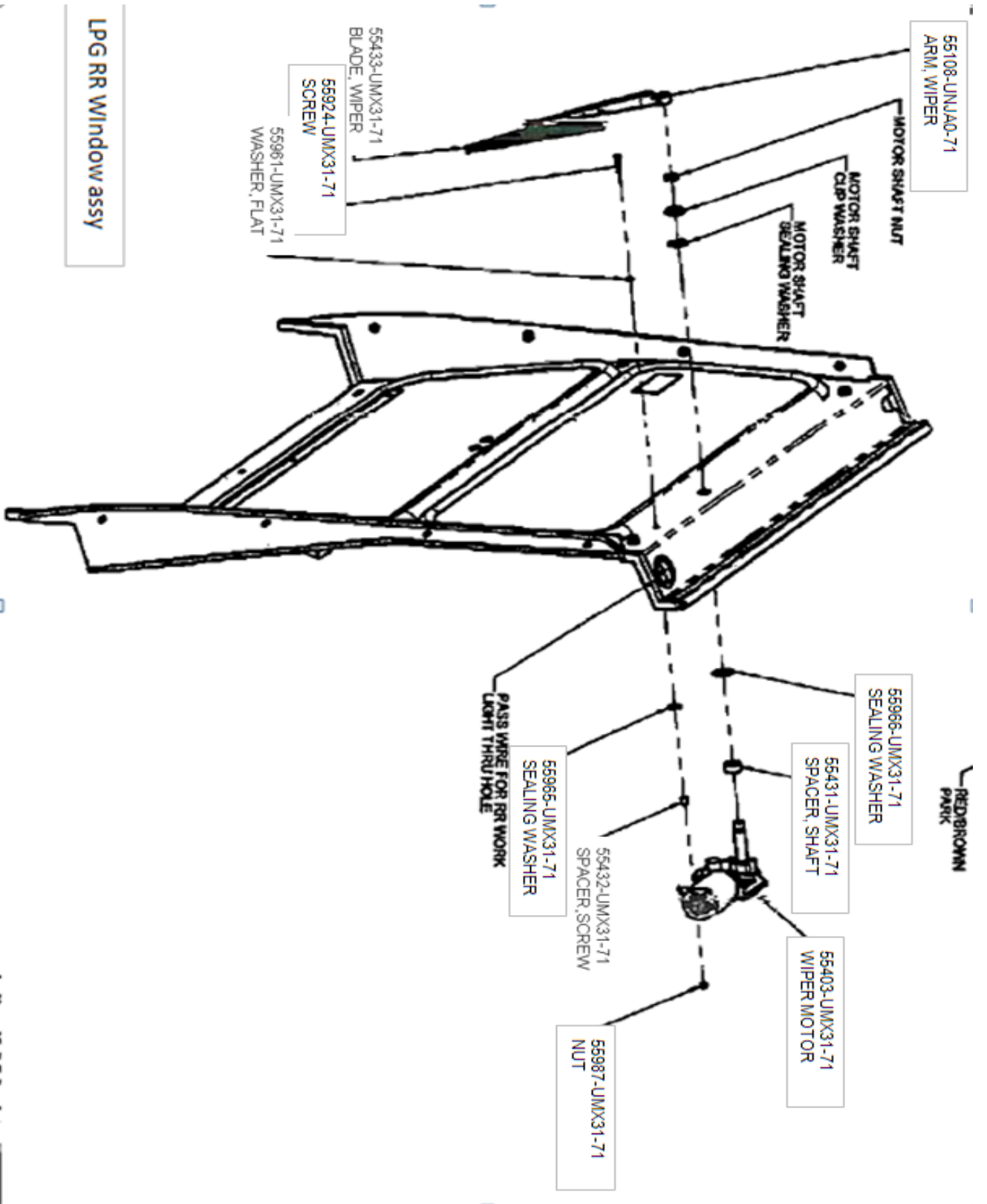
Latch, RR window

55142-UNLG4-71	BRACKET, LATCH MTG	1
55143-UNLG4-71	LATCH, WINDOW	1
55144-UNLG4-71	SCREW, LATCH	2

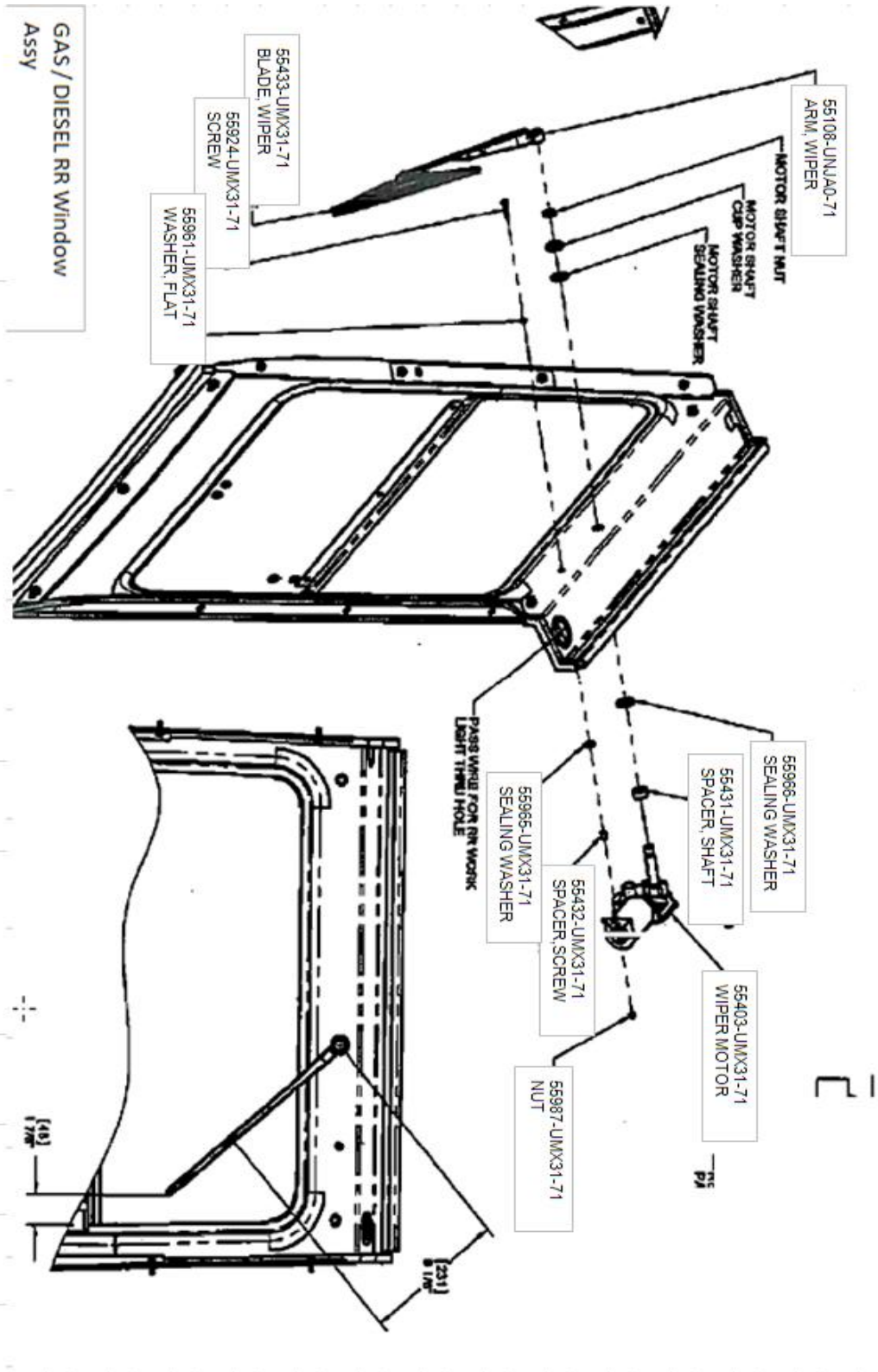
RR window, LPG

55209-UMX31-71	Glass, RR Window LPG	1
55631-UMX31-71	Seal, Glass Offset	1
55208-UMX31-71	Assembly, Window - Full Egress Throw-out	1
55271-UMX31-71	HINGE KIT	1

See illustrations on pages 3 and 4.



Toyota Industrial Equipment



55209-UMX31-71

Glass, RR Window - LPG

Is the top portion and is at 12" tall



55208-UMX31-71

Assembly, Window - Full Egress Throw-out

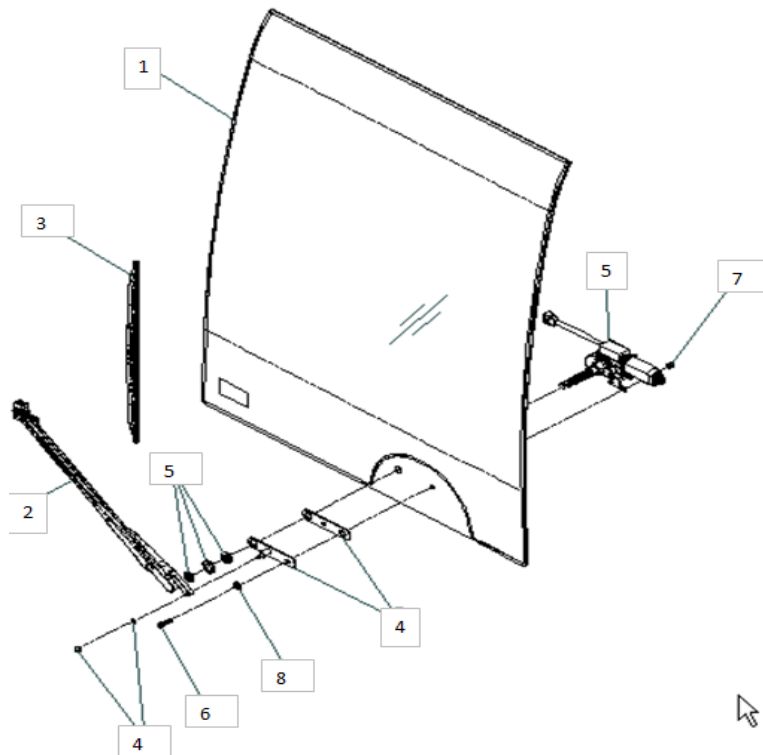
Bottom part is close to 13" ¾...



TS31 Std Cab Front Glass

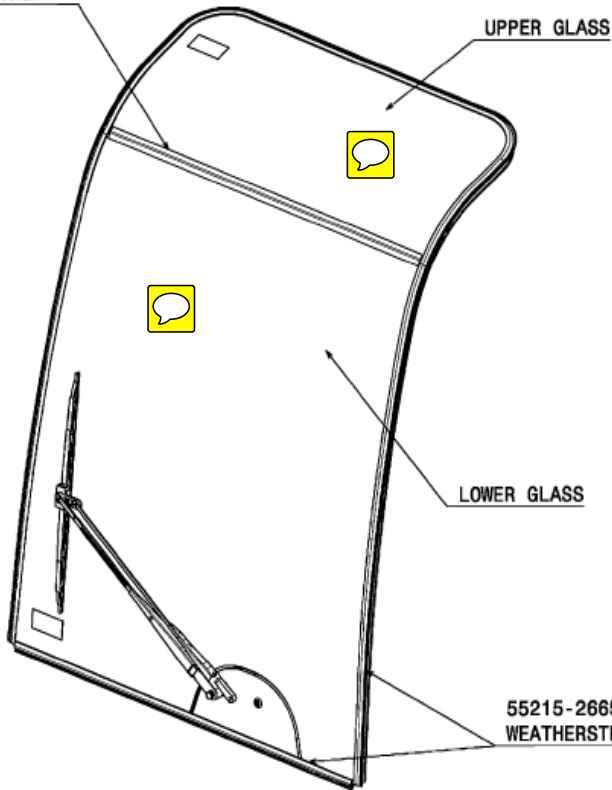
STD X800 TS31	Standard Cab	8FG/D/CU20-32		
Not for H00H	PART NUMBER	DESCRIPTION	WIPER MOUNTING POSITION	Item
Premium cab	55202-UMX31-71	WINDSHIELD	BOTTOM	#1
	55402-UMX31-71	WIPER MOTOR	BOTTOM	#5 (Includes hardware)
	55421-UMX31-71	WIPER ARM	BOTTOM	#2
	55422-UMX31-71	WIPER BLADE	BOTTOM	#3

Part Number	Description	Qty	Item
58511-UNPM9-71	Pantograph Adapter, kit (includes Hardware below)	1	#4
55923-UMX31-71	Screw, Hex Head Cap - 1/4-20 x 1-1/4"	1	Kit
55985-UMX31-71	Nut, Nylock Hex - 1/4-20 Grade 5 ZP Steel	1	Kit
55923-UMX31-71	Screw, Hex Head Cap - 1/4-20 x 1-1/4" - Grade 5 ZP	1	#6
55985-UMX31-71	Nut, Nylock Hex - 1/4-20 Grade 5 ZP Steel	1	#7
55965-UMX31-71	Washer, Bonded Sealing 1/4 x 3/4 OD	1	#8



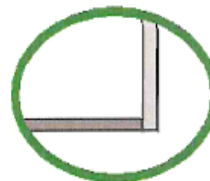
TS31 Std Cab Front Glass

55216-26650-71
WEATHERSTRIP

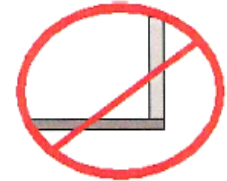


**INSTALL SEAL ACCORDING THE BELOW METHOD
IN ORDER TO AVOID WATER LEAK AND IMPROVE
APPEARANCE.**

First, install the seal around the **sides** of the glass starting at the very bottom edge.
Second, install the **bottom** seal, cutting it to fit between the seal on each side.



GOOD



N/G

Part Number	Description	Qty
55212-U2230-71	Windshield - Front Upper	
55202-UMX31-71	Assembly, Lower Windshield &	
55215-26650-71	weatherstrip, fr window	1 pc
55216-26650-71	weatherstrip, fr window,small	1 pc

**TS31 Std Cab Doors**

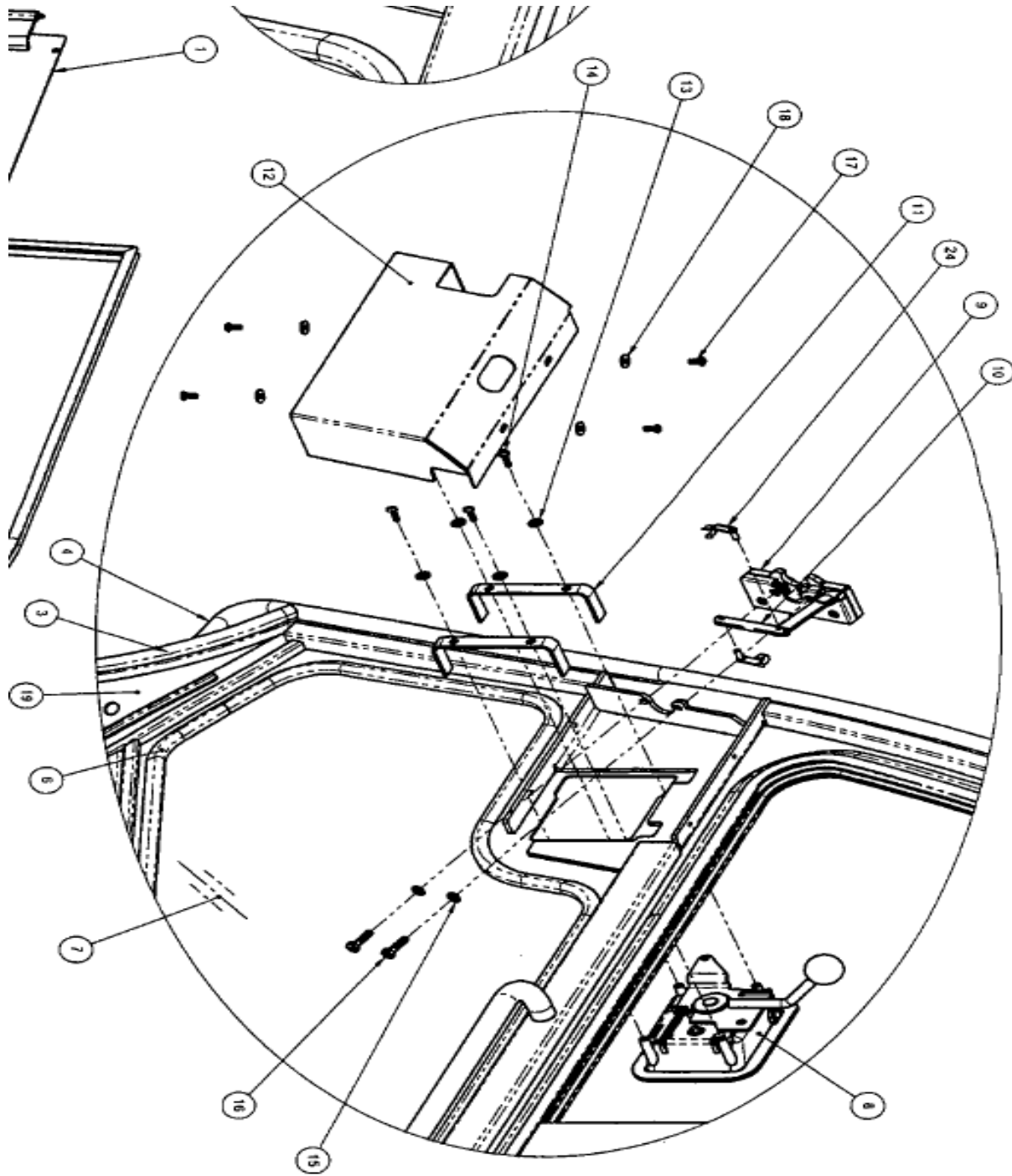
RH Doors

55301-UMX31-71	Assembly - RH Door P10, C20, 30		
Part Number	Parts for the above: Description	QTY	Item
55330-UMX31-71	Weldment, RH Door	1	#1
55668-UMX31-71	Foam Strip, Lower Door	1	#2
55611-UMX31-71	Seal, End Bulb	1	#3
55621-UMX31-71	Seal, Door	1	#4
55211-UMX31-71	Glass, Lower Door	1	#7
55631-UMX31-71	Seal, Glass Offset	1	#5 & #6
55850-UNLG4-71	Handle, RH Door	1	#8
55850-UNJA0-71	Latch, RH 2 Rotor	1	#9
55814-UNJA0-71	Clip - Door Handle Linkage	2	#24
55815-UNJA0-71	Linkage Rod	1	#10
55830-UMX31-71	Cover, RH Door Latch	1	#12
55816-UNJA0-71	Bracket, Paddle Handle Mounting	2	#11
55892-UNJA0-71	Washer, Flat	4	#13
55939-UMX31-71	Screw, Phillips Pan Head - #10-24 x .625	4	#14
55894-UNJA0-71	Washer, Lock - 1/4" ZP Steel	2	#15
55922-UMX31-71	Screw, Hex Head Cap - 1/4-20 x 1" - Grade 5 ZP Ste	2	#16
55921-UMX31-71	Screw, Button Hex Socket Cap - M5x0.8 x 12-ZP St	4	#17
55962-UMX31-71	Washer, Flat Fender - M5 - ZP Steel	4	#18
55311-UMX31-71	Weldment, RH Door Filler Plate - P10, C20, 30	1	#19
55205-UMX31-71	Assembly, RH Sliding Window	1	#25
55251-UMX31-71	ASSY, SLIDING WINDOW LATCH (includes Hardware)	1	NS
55265-UNJA0-71	Washer, Flat Fender - M6 - ZP Steel	3	#20
55911-UMX31-71	Stud, Ball	1	#21
55986-UMX31-71	Nut, Nylock Hex - 5/16-18 Grade 5 ZP Steel	1	#22
55985-UMX31-71	Nut, Hex Nylock - M6x1.0 Class 8 ZP Steel	3	#23
55305-UMX31-71	Kit, RH Door Hinge (all mounting hardware)		

See Illustrations on pages 8 & 9

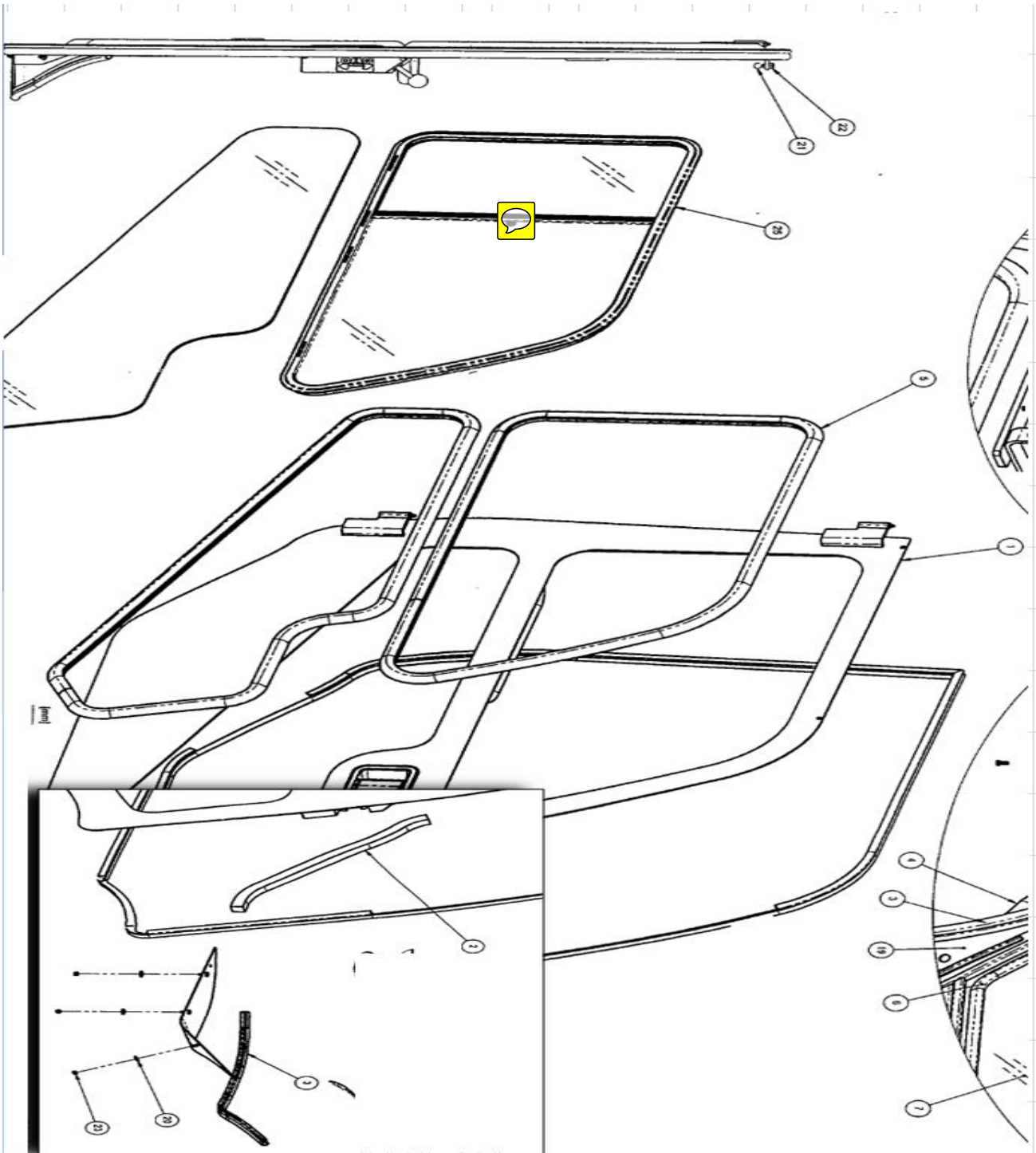
Toyota Industrial Equipment

Inner Components:



Toyota Industrial Equipment

Seals and Glass



Toyota Industrial Equipment

RH door P20, P30

55303-UMX31-71	Assembly - RH Door P20, 30		
Part Number	Parts for the above:	Qty	Item
55330-UMX31-71	Weldment, RH Door	1	#1
55668-UMX31-71	Foam Strip, Lower Door	1	#2
55611-UMX31-71	Seal, End Bulb	1	#3
55621-UMX31-71	Seal, Door - Film Pressed Corner	1	#4
55631-UMX31-71	Seal, Glass Offset	1	#5 & #6
55211-UMX31-71	Glass, Lower Door	1	#7
55850-UNLG4-71	Handle, RH Door	1	#8
55850-UNJA0-71	Latch, RH 2 Rotor	1	#9
55814-UNJA0-71	Clip - Door Handle Linkage	2	#24
55815-UNJA0-71	Linkage Rod	1	#10
55830-UMX31-71	Cover, RH Door Latch	2	#12
55816-UNJA0-71	Bracket, Paddle Handle Mounting	2	#11
55892-UNJA0-71	Washer, Flat	4	#13
55939-UMX31-71	Screw, Phillips Pan Head - #10-24 x .625	2	#14
55894-UNJA0-71	Washer, Lock - 1/4" ZP Steel	2	#15
55922-UMX31-71	Screw, Hex Head Cap - 1/4-20 x 1" - Grade 5 ZP Ste	4	#16
55921-UMX31-71	Screw, Button Hex Socket Cap - M5x0.8 x 12-ZP St	4	#17
55962-UMX31-71	Washer, Flat Fender - M5 - ZP Steel	1	#18
55331-UMX31-71	Weldment, RH Door Filler Plate - P20, 30,	1	#19
55205-UMX31-71	Assembly, RH Sliding Window	1	#25
55251-UMX31-71	ASSY, SLIDING WINDOW LATCH (includes Hardware)	1	NS
55265-UNJA0-71	Washer, Flat Fender - M6 - ZP Steel	3	#20
55911-UMX31-71	Stud, Ball	1	#21
55986-UMX31-71	Nut, Nylock Hex - 5/16-18 Grade 5 ZP Steel	1	#22
55985-UMX31-71	Nut, Hex Nylock - M6x1.0 Class 8 ZP Steel	3	#23
55305-UMX31-71	Kit, RH Door Hinge (all mounting hardware)		

Reference pages 8 & 9 for illustration.

Toyota Industrial Equipment

LH door P1, C20, C30

LH doors			
Part Number	Parts for the above:	Qty	Item
55302-UMX31-71	Assembly - LH Door P10, C20, 30	1	
55340-UMX31-71	Weldment, LH Door	1	#1
55668-UMX31-71	Foam Strip, Lower Door	1	#2
55611-UMX31-71	Seal, End Bulb -	1	#3
55621-UMX31-71	Seal, Door - Film Pressed Corner	1	#4
55631-UMX31-71	Seal, Glass Offset	1	#5 & #6
55211-UMX31-71	Glass, Lower Door	1	#7
55820-UNLG4-71	Handle, LH Door - Non-Locking	1	#8
55860-UNJA0-71	Latch, LH 2 Rotor	1	#9
55814-UNJA0-71	Clip - Door Handle Linkage	2	#24
55815-UNJA0-71	Linkage Rod, Ø3/8	1	#10
55840-UMX31-71	Cover, LH Door Latch	1	#12
55816-UNJA0-71	Bracket, Paddle Handle Mounting	2	#11
55892-UNJA0-71	Washer, Flat - #10	4	#13
55939-UMX31-71	Screw, Phillips Pan Head - #10-24 x .625	4	#14
55894-UNJA0-71	Washer, Lock - 1/4" ZP Steel	2	#15
55922-UMX31-71	Screw, Hex Head Cap - 1/4-20 x 1" - Grade 5 ZP Ste	2	#16
55921-UMX31-71	Screw, Button Hex Socket Cap - M5x0.8 x 12-ZP St	4	#17
55962-UMX31-71	Washer, Flat Fender - M5 - ZP Steel	4	#18
55321-UMX31-71	Weldment, LH Door Filler Plate - P10, C20, 30	1	#19
55265-UNJA0-71	Washer, Flat Fender - M6 - ZP Steel	3	#20
55911-UMX31-71	Stud, Ball	1	#21
55986-UMX31-71	Nut, Nylock Hex - 5/16-18 Grade 5 ZP Steel	1	#22
55985-UMX31-71	Nut, Hex Nylock - M6x1.0 Class 8 ZP Steel	3	#23
55206-UMX31-71	Assembly, LH Sliding Window	1	#25
55251-UMX31-71	ASSY, SLIDING WINDOW LATCH (includes Hardware)	1	NS
55306-UMX31-71	Kit, LH Door Hinge (Includes hardware)	1	

See Illustrations on pages 8 & 9

Toyota Industrial Equipment



LH door P20, P30

Part Number	Parts for the above:	Qty	Item
55304-UMX31-71	Assembly - LH Door P20, 30	1	
55340-UMX31-71	Weldment, LH Door	1	#1
55668-UMX31-71	Foam Strip, Lower Door	1	#2
55611-UMX31-71	Seal, End Bulb - RS-127	1	#3
55621-UMX31-71	Seal, Door - Film Pressed Corner	1	#4
55631-UMX31-71	Seal, Glass Offset -	1	#5 & #6
55211-UMX31-71	Glass, Lower Door	1	#7
55820-UNLG4-71	Handle, LH Door - Non-Locking	1	#8
55860-UNJA0-71	Latch, LH 2 Rotor	1	#9
55814-UNJA0-71	Clip - Door Handle Linkage	2	#24
55815-UNJA0-71	Linkage Rod, Ø3/8	1	#10
55840-UMX31-71	Cover, LH Door Latch	1	#12
55816-UNJA0-71	Bracket, Paddle Handle Mounting	2	#11
55892-UNJA0-71	Washer, Flat - #10 - USS ZP Steel	4	#13
55939-UMX31-71	Screw, Phillips Pan Head - #10-24 x .625	4	#14
55894-UNJA0-71	Washer, Lock - 1/4" ZP Steel	2	#15
55922-UMX31-71	Screw, Hex Head Cap - 1/4-20 x 1" - Grade 5 ZP Ste	2	#16
55921-UMX31-71	Screw, Button Hex Socket Cap - M5x0.8 x 12-ZP St	4	#17
55962-UMX31-71	Washer, Flat Fender - M5 - ZP Steel	4	#18
55341-UMX31-71	Weldment, LH Door Filler Plate - P20, 30, Upswept	1	#19
55265-UNJA0-71	Washer, Flat Fender - M6 - ZP Steel	3	#20
55911-UMX31-71	Stud, Ball	1	#21
55986-UMX31-71	Nut, Nylock Hex - 5/16-18 Grade 5 ZP Steel	1	#22
55985-UMX31-71	Nut, Hex Nylock - M6x1.0 Class 8 ZP Steel	3	#23
55206-UMX31-71	Assembly, LH Sliding Window	1	#25
55251-UMX31-71	ASSY, SLIDING WINDOW LATCH (includes Hardware)	1	NS
55306-UMX31-71	Kit, LH Door Hinge (Includes hardware)	1	

Reference pages 8 & 9 for illustration.

Toyota Industrial Equipment

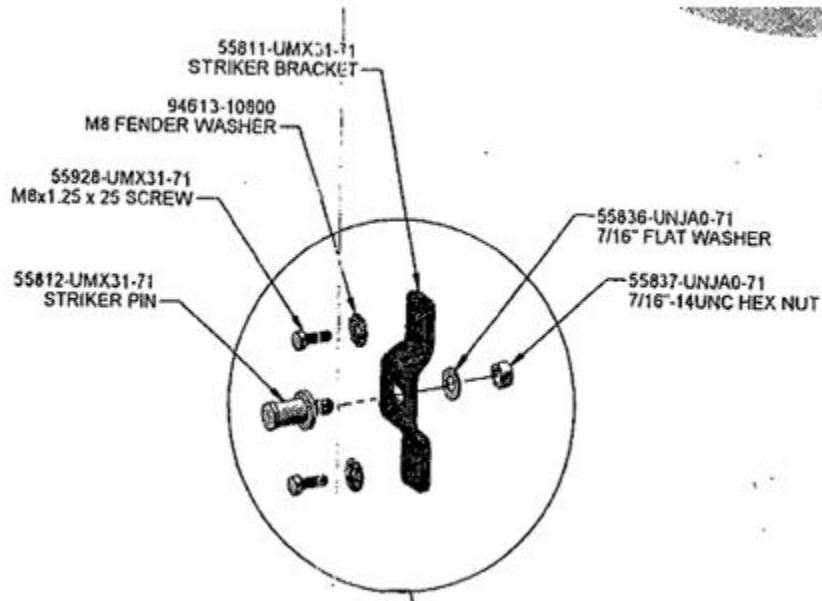
Door Dampener and Striker (All STD Cab doors)

⊕ Door Dampener

Part Number	Description	Qty
55823-UMX31-71	BRACKET, DAMPENER	1
91671-80825	BOLT, FLANGE w/WSR	4
55822-UMX31-71	DAMPENER	2
55986-UMX31-71	NUT, NYLOCK 5/16-18	2
55911-UMX31-71	STUD, BALL	2

Door Striker Kit

55801-UMX31-71	Kit, Door Striker
----------------	-------------------



TS31 Operator Fan and Heater

Fan, Operator		(no Illustration)
Part Number	Description	Qty
58753-UMX28-71	Bracket, Operator Fan	1
58750-U2250-71	FAN ASSY, AUTO	1
58721-U2230-71	BOLT, HEXAGON SOCKET HEAD CAP	4
90465-U2001-71	BAND	1
91672-81025	BOLT, FLANGE W/WSR	2
55408-UMX31-71	Wire Harness, Fan	1

Heater Kits:

Heater kits, includes Heater and all plumping hardware

55104-UMX31-71	Kit, Heater - Gas
55125-UMX31-71	Kit, Heater - Diesel
55135-UMX31-71	Kit, Heater - LPG

55136-UMX31-71	Kit, Heater - ULS Gas
55126-UMX31-71	Kit, Heater - ULS Diesel
55137-UMX31-71	Kit, Heater - ULS LPG

TS31 Operator Fan and Heater


Quick Reference of inner heater components:

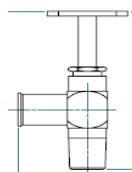
STD Heater inner components:

Part Number	Description	Qty
58316-UMX31-71	FILTER, ELEMENT	1
55127-UMX31-71	Heater, Complete assy	1
58314-UMX31-71	LOUVER, EURO STYLE	1
58315-UMX31-71	LOUVER, BALL	2
58321-UMX31-71	HEATER COIL - ALUMINUM	1
58311-UMX31-71	BLOWER FAN, SPAL	1

ULS Heater inner components

Part Number	Description	Qty
58316-UMX31-71	FILTER, ELEMENT	1
55108-UMX31-71	FAN, NIDEC	1
58321-UMX31-71	HEATER COIL - ALUMINUM	1
58314-UMX31-71	LOUVER, EURO STYLE	1
58315-UMX31-71	LOUVER, BALL	2

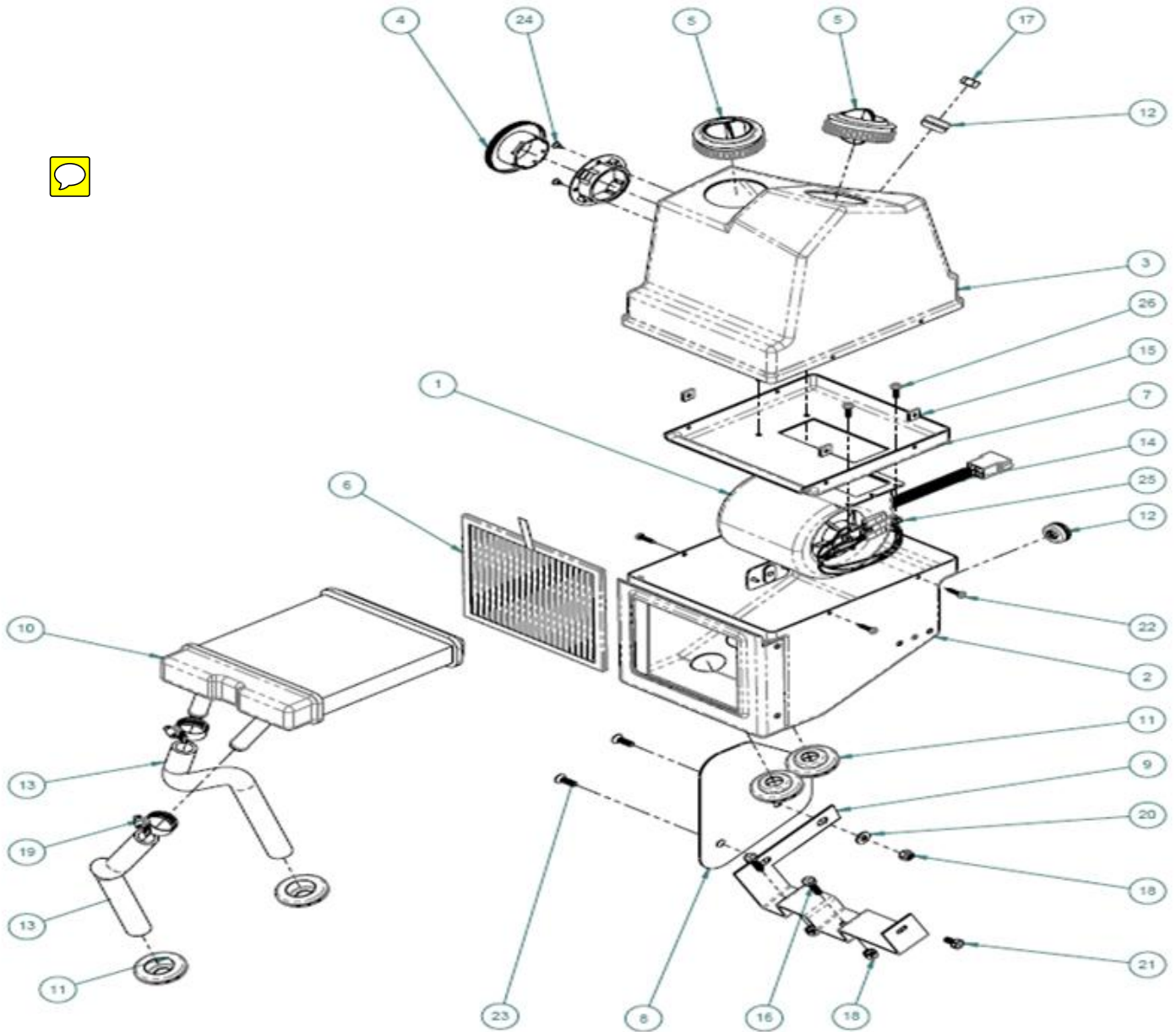
Part Number	Description	Qty
 58154-UMX31-71	DRAIN COCK / Shut-off valve	1



TS31 Operator Fan and Heater

Complete heater breakdown:

STD Heater illustration:



Toyota Industrial Equipment

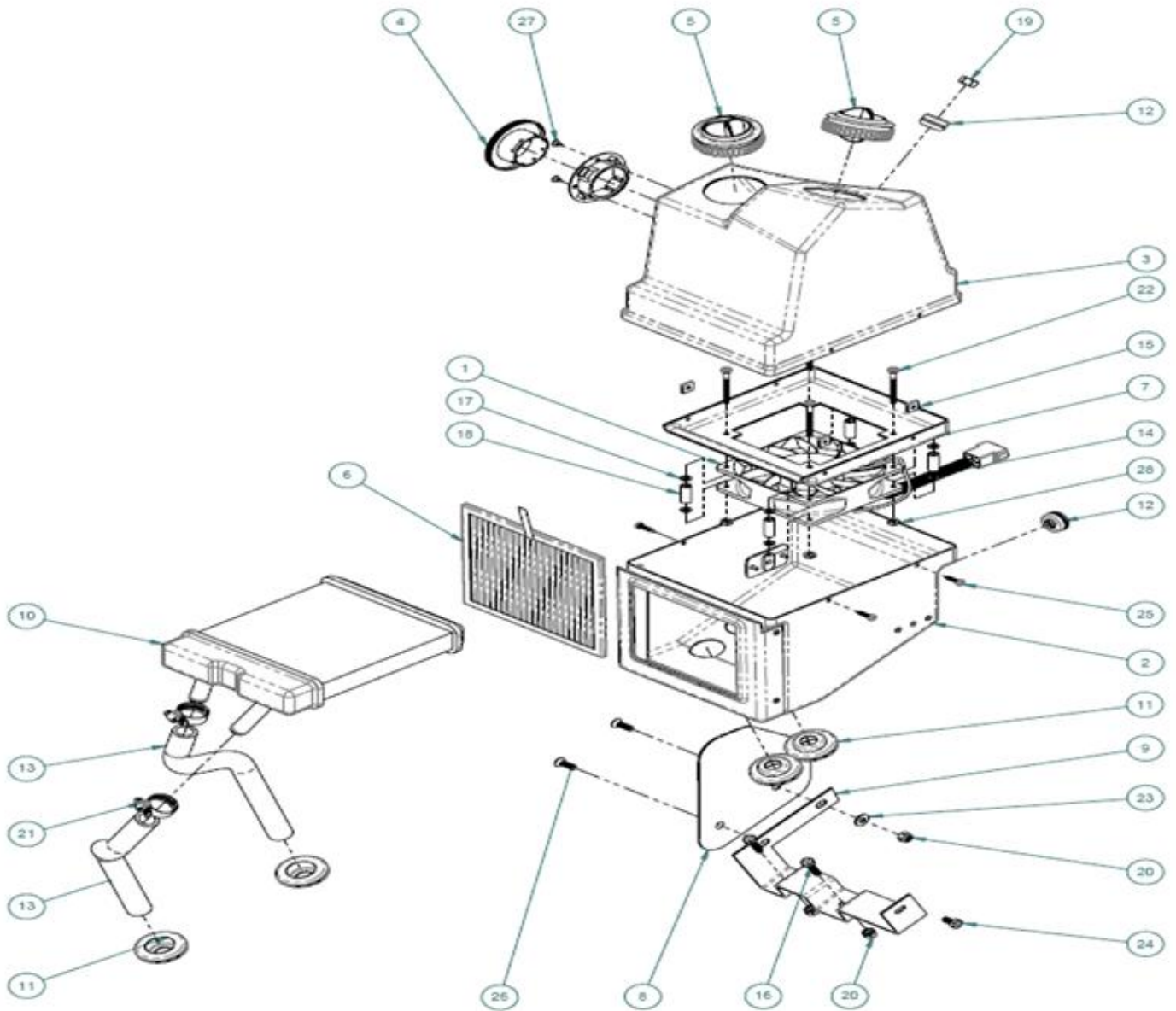
TS31 Operator Fan and Heater
Complete heater breakdown:

Complete list, Heater components, inner for STD Heater (not UL-S)			
Item	Qty	Description	Part #
#1	1	BLOWER FAN, SPAL	58311-UMX31-71
#2	1	ASSEMBLY, LOWER CASING HALF	58312-UMX31-71
#3	1	ASSEMBLY, UPPER CASING HALF	58313-UMX31-71
#4	1	LOUVER, EURO STYLE	58314-UMX31-71
#5	2	LOUVER, BALL	58315-UMX31-71
#6	1	FILTER ELEMENT	58316-UMX31-71
#7	1	PANEL, SPAL MOTOR MOUNT	58317-UMX31-71
#8	1	PLATE, CLOSE-OUT PANEL	58318-UMX31-71
#9	1	BRACKET, HEATER MOUNTING	58319-UMX31-71
#10	1	HEATER COIL - ALUMINUM	58321-UMX31-71
#11	4	GROMMET, HOSE	58322-UMX31-71
#12	2	GROMMET, HOLE	58323-UMX31-71
#13	2	5/8 HEATER HOSE Ø.625 I.D. x Ø.900 O.D.	58324-UMX31-7
#14	1	23/8 WIRE LOOM, NYLON	58325-UMX31-71
#15	4	SCREW RETAINER	58326-UMX31-71
#16	2	HEX HEAD CAP SCREW - ZP STEEL,	58327-UMX31-71
#17	1	HEX NUT - ZP STEEL	58328-UMX31-71
#18	3	HEX LOCKNUT -	58329-UMX31-71
#19	2	HOSE CLAMP, WORM DRIVE	58331-UMX31-71
#20	1	FLAT WASHER	58332-UMX31-71
#21	1	HEX HEAD CAP SCREW - BLACK-OXIDE STEEL	58333-UMX31-71
#22	4	PHILLIPS PAN HEAD SHEET METAL SCREW -8-18X3/4	58334-UMX31-71
#23	2	SOCKET FLAT COUNTERSUNK HEAD SCREW - 1/4-20x 3/4	58335-UMX31-71
#24	2	PHILLIPS FLAT COUNTERSUNK HEAD SCREW - #8-18x 3/8	58336-UMX31-71
#25	4	HEX NUT WITH TOOTH WASHER - #10-24	58337-UMX31-71
#26	4	PHILLIPS PAN HEAD SCREW - #10-24 x .63	58338-UMX31-71

TS31 Operator Fan and Heater

Complete heater breakdown:

UL-S heater illustration:



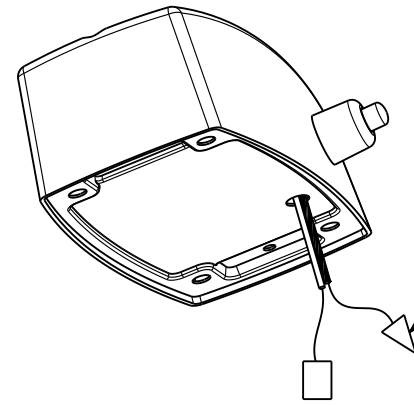
Toyota Industrial Equipment

TS31 Operator Fan and Heater
Complete heater breakdown

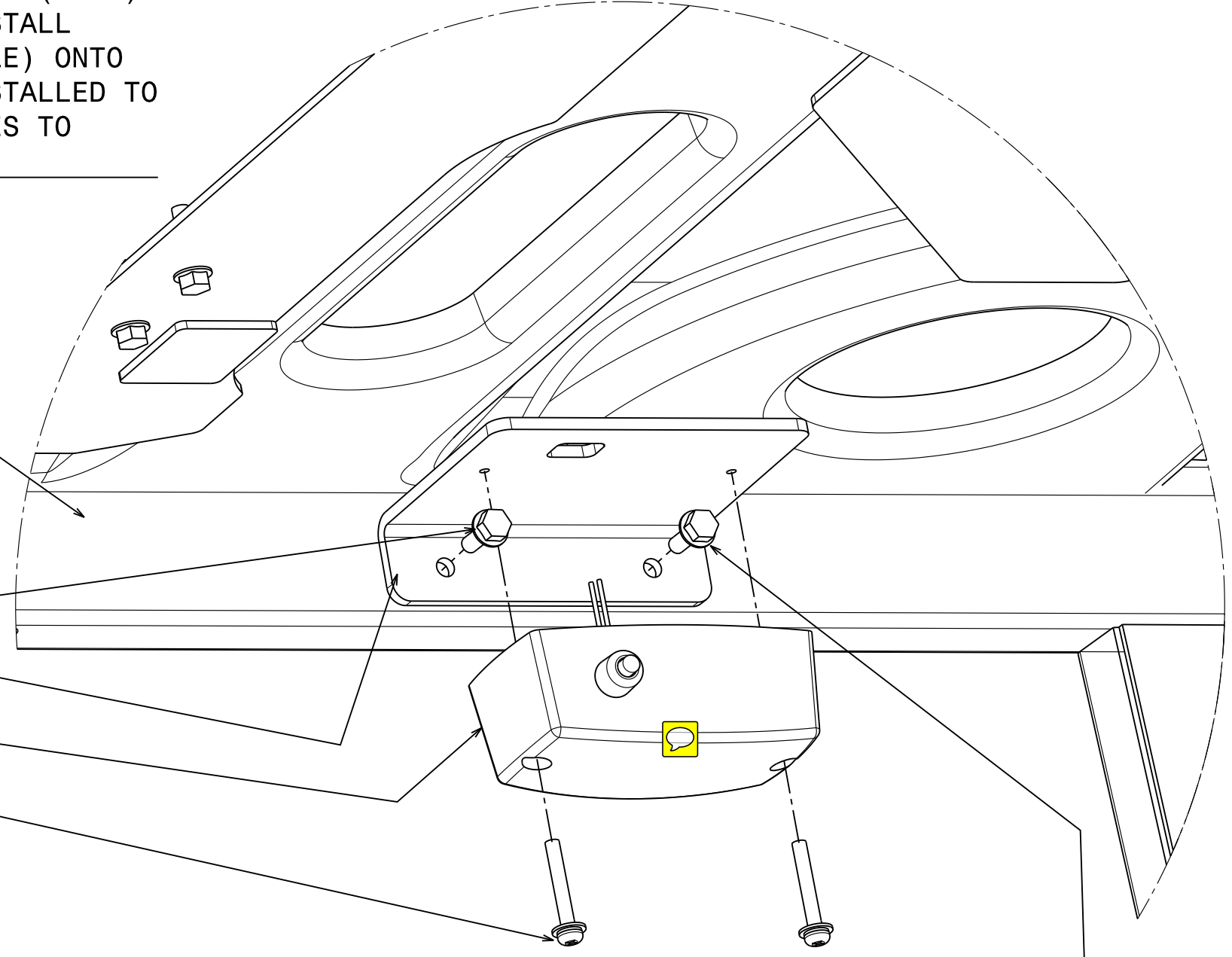
UL-S heater components:			
Item	Qty	Description	Part #
#1	1	FAN, NIDEC	55108-UMX31-71
#2	1	ASSEMBLY, LOWER CASING HALF	58312-UMX31-71
#3	1	ASSEMBLY, UPPER CASING HALF	58313-UMX31-71
#4	1	LOUVER, EURO STYLE	58314-UMX31-71
#5	2	LOUVER, BALL	58315-UMX31-71
#6	1	FILTER ELEMENT	58316-UMX31-71
#7	1	PANEL, NIDEC MOTOR MOUNT	58341-UMX31-71
#8	1	PLATE, CLOSE-OUT PANEL	58318-UMX31-71
#9	1	BRACKET, HEATER MOUNTING	58319-UMX31-71
#10	1	HEATER COIL - ALUMINUM	58321-UMX31-71
#11	4	GROMMET, HOSE	58322-UMX31-71
#12	2	GROMMET, HOLE	58323-UMX31-71
#13	2	5/8 HEATER HOSE	58324-UMX31-71
#14	1	3/8 WIRE LOOM, NYLON	58325-UMX31-71
#15	4	SCREW RETAINER	58326-UMX31-71
#16	2	HEX HEAD CAP SCREW 5 - 1/4-20 UNC x 1	58327-UMX31-71
#17	8	FLAT WASHER	58342-UMX31-71
#18	4	SPACER, UNTHREADED RD - 3/8OD x #12ID x 1"	58343-UMX31-71
#19	1	HEX NUT 2 - 3/8-16	58328-UMX31-71
#20	3	HEX LOCKNUT 1/4-20	58329-UMX31-71
#21	2	HOSE CLAMP, WORM DRIVE	58331-UMX31-71
#22	4	PHILLIPS PAN HEAD SCREW - #10-24 x 2.00	58344-UMX31-71
#23	1	FLAT WASHER 1/4 x 5/8 OD	58332-UMX31-71
#24	1	HEX HEAD CAP SCREW 5 - 1/4-20 UNC x 1/2	58333-UMX31-71
#25	4	PHILLIPS PAN HEAD - #8-18 x .75	58334-UMX31-71
#26	2	SOCKET FLAT COUNTERSUNK HEAD SCREW 1/4-20x 3/4	58335-UMX31-71
#27	2	PHILLIPS FLAT COUNTERSUNK HEAD SCREW - #8-18x 3/8	58336-UMX31-71
#28	4	HEX NUT WITH TOOTH WASHER - #10-24	58337-UMX31-71

STRAIGHTNESS
 FLATNESS
 CIRCULARITY
 CYLINDRICITY
 PROFILE OF ANY LINE
 PROFILE OF ANY SURFACE
 PARALLELISM
 PERPENDICULARITY
 ANGULARITY
 POSITION
 CONCENTRICITY
 SYMMETRY
 SIMPLE RUN-OUT
 TOTAL RUN-OUT
 MAX. MATERIAL CONDITION
 PROJECTED TOLERANCE ZONE

NO.	MARK	REVISION	E.C.I. No.	DATE	NAME
	○	NEW ADOPTION	MX31E0013		

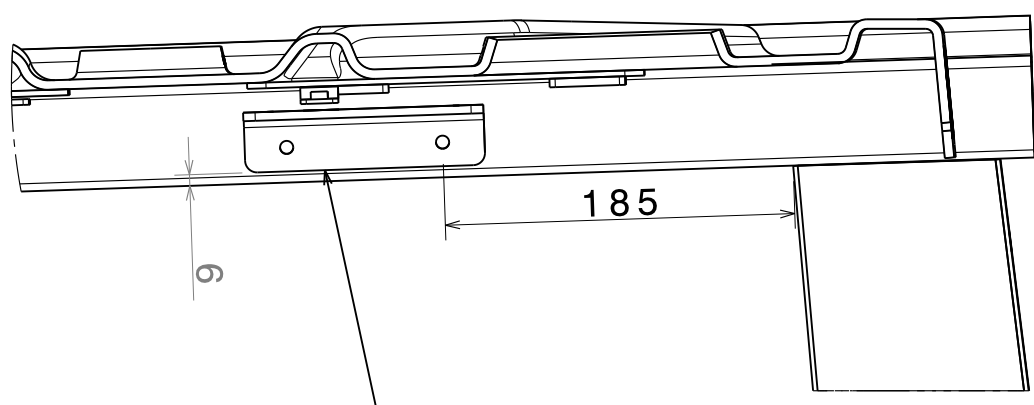


INSTALL 56581-U2100-71 (MALE)
 ONTO BLACK WIRE & INSTALL
 56582-U2100-71 (FEMALE) ONTO
 WHITE WIRE. AFTER INSTALLED TO
 BRACKET, CONNECT WIRES TO
 CABIN HARNESS.



RH PILLAR

- 91551-80816 BOLT, FLANGE (2 PCS)
- 55444-UMX31-71 BRACKET, OPER LIGHT
- 55845-UMT31-71 OPERATOR LIGHT
- 55942-UMX31-71 SCREW (2 PCS)



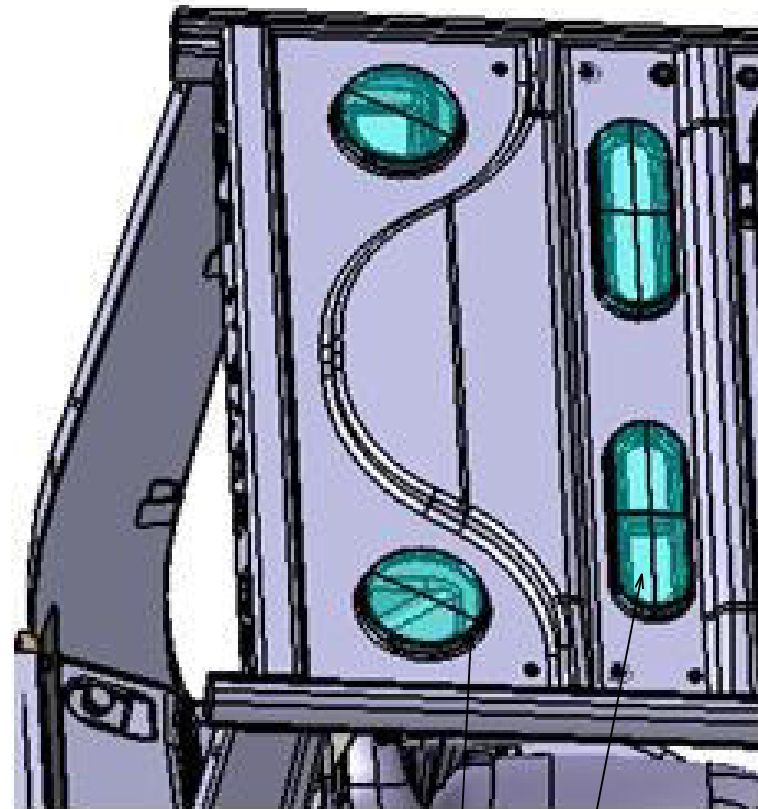
ALIGN BRACKET AS SHOWN AND DRILL
 2 HOLES FOR M6 INSERT NUTS AND
 INSTALL 2 INSERT NUTS 90179-06002-71.
 (NOT SHOWN)

CONNECT GROUND WIRE
 FROM CAB WIRE HARNESS
 TO THIS BOLT.

THIS DRAWING AND INFORMATION IS THE PROPERTY OF TOYOTA INDUSTRIAL
 EQUIPMENT MFG., INC. (T.I.E.M.) IT IS LENT ON THE CONDITION THAT IT,
 IN WHOLE OR IN PART, SHALL NOT BE REPRODUCED, COPIED, LENT OR
 DISCLOSED TO ANY THIRD PARTY WITHOUT WRITTEN CONSENT OF T.I.E.M.
 AND SHALL BE RETURNED TO T.I.E.M.

1		ASSY DWG, OPERATOR LIGHT	00566-UMX31-71
NO.	MATERIAL / SIZE	PART NAME	PART NUMBER
		HEAT TREATMENT	SURFACE TREATMENT
APPROVE	CHECK	MALCOMB	
	DESIGN	FRITSCH	
UNIT	MM	DATE CREATED	10/22/2009
THIRD ANGLE PROJECTION		TOYOTA INDUSTRIAL EQUIPMENT MFG., INC. COLUMBUS, IN.	
		WASS (kg)	SCALE
		FORGING	DWG HIST
		B	

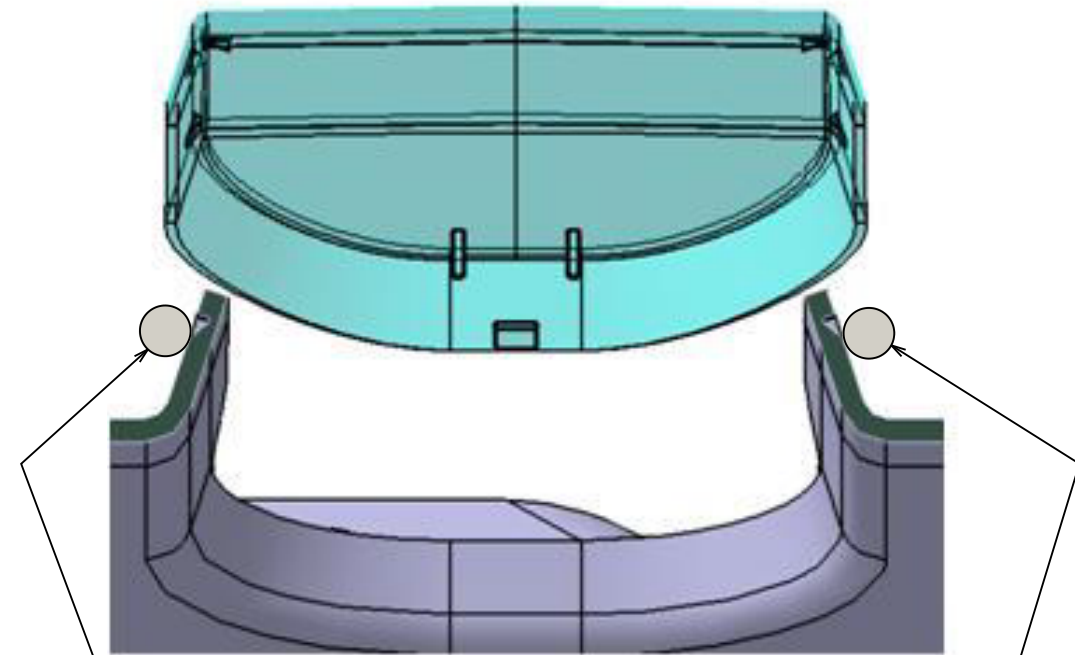
- STRAIGHTNESS
- FLATNESS
- CIRCULARITY
- CYLINDRICITY
- PROFILE OF ANY LINE
- PROFILE OF ANY SURFACE
- PARALLELISM
- PERPENDICULARITY
- ANGULARITY
- POSITION
- CONCENTRICITY
- SYMMETRY
- SIMPLE RUN-OUT
- TOTAL RUN-OUT
- MATERIAL CONDITION
- PROJECTED TOLERANCE ZONE



54154-23320-71 ROOF CAP (2 PCS)

54153-26600-71 ROOF CAP (2 PCS)

NO.	MARK	REVISION	E.C.I. No.	DATE	NAME
	○	NEW ADOPTION	MX31E0013		



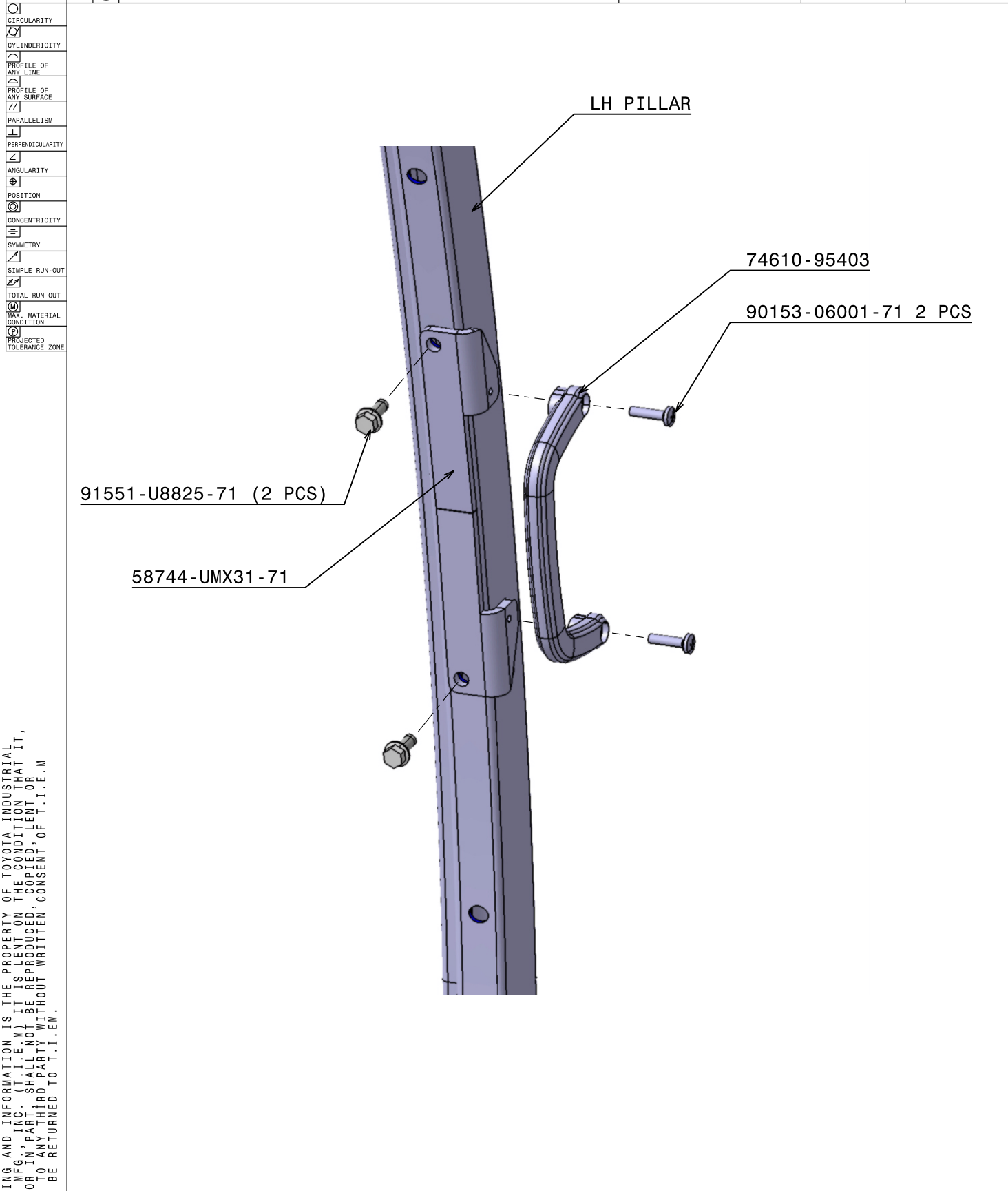
DAP (R) 100% SILICONE RUBBER SEALANT, CLEAR

THIS DRAWING AND INFORMATION IS THE PROPERTY OF TOYOTA INDUSTRIAL EQUIPMENT MFG., INC. (T.I.E.M.) IT IS LENT ON THE CONDITION THAT IT, IN WHOLE OR IN PART, SHALL NOT BE REPRODUCED, COPIED, LENT OR DISCLOSED TO ANY THIRD PARTY WITHOUT WRITTEN CONSENT OF T.I.E.M. AND SHALL BE RETURNED TO T.I.E.M.



1		ASSY DWG, ROOF CAP	00541-UMX31-71	
NO.	MATERIAL / SIZE	PART NAME	PART NUMBER	
		HEAT TREATMENT	SURFACE TREATMENT	
APPROVE	CHECK	MALCOMB		
	DESIGN	FRITSCH		
UNIT	MM	DATE CREATED	10/29/2009	
THIRD ANGLE PROJECTION		TOYOTA INDUSTRIAL EQUIPMENT MFG., INC.		COLUMBUS, IN. B

STRAIGHTNESS	NO.	MARK	REVISION	E.C.I. No.	DATE	NAME
FLATNESS		○				



THIS DRAWING AND INFORMATION IS THE PROPERTY OF TOYOTA INDUSTRIAL EQUIPMENT MFG., INC. (T.I.E.M.) IT IS LEANT ON THE CONDITION THAT IT, IN WHOLE OR IN PART, SHALL NOT BE REPRODUCED, COPIED, OR DISCLOSED TO ANY THIRD PARTY WITHOUT WRITTEN CONSENT OF T.I.E.M. AND SHALL BE RETURNED TO T.I.E.M.

1	ASSY DWG, ASSIST GRIP		00557-UMX31-71	
NO.	MATERIAL / SIZE	PART NAME	PART NUMBER	
APPROVE	CHECK	MALCOMB	HEAT TREATMENT	
LAND	DESIGN	FRITSCH	SURFACE TREATMENT	
UNIT	MM	DATE CREATED	10/15/2009	FORGING
THIRD ANGLE PROJECTION		TOYOTA INDUSTRIAL EQUIPMENT MFG., INC.		COLUMBUS, IN.
			SCALE	DWG HIST
				A